



ISO 9001 : 2015

FTCCI Review



CIN No.U91110TG1964NPL001030

THE FEDERATION OF TELANGANA CHAMBERS OF COMMERCE AND INDUSTRY

Vol.III No.39 | September 28, 2022 | Rs.15/-

President
Anil Agarwal
Senior Vice-President
Meela Jayadev
Vice-President
Suresh Kumar Singhal
Immediate Past President
K. Bhasker Reddy
Chief Executive Officer
Khyati Amol Naravane

Managing Committee

C V Anirudh Rao
Venkat Jasti
Manoj Kumar Agarwal
Meela Sanjay
Vinod Kumar Agarwal
Chakravarthi AVPS
Arvind Srimal
A. Prakash
Rupesh Agarwal
Narayan Inani
Devata Rama Kumar
Abhishek Tibrewala
Sanjay Kumar Agarwal
Prakash Chandra Garg
Musunuri Ramakrishna Prasad
D. Sunil Reddy
Rakhi Kankaria
Prem Chand Kankaria
Manish Surana
R. Ravi Kumar
Krishna Kumar Maheshwari
CA Naresh Chandra Gelli V
CA Sudhir V.S
K Mohan Raidu
CA Hari Govind Prasad
Kripaniwas Sharma
Pawan Kumar Bansal
Challa Gunaranjan
Dr. K. Narayana Reddy
CA Ritesh Mittal
Smt. Bhagwati Devi Baldwa
P. Krishna
Srinivas Garimella
Rajendra Agarwal
Vimallesh Gupta

Editorial Board

CHAIRMAN

Sri Arun Luharuka,
Past President, FTCCI

MEMBERS

Dr. M.Gopalakrishna, I.A.S (Retd.)
Sri Srinivas Garimella,
Member, Managing Committee -FTCCI

Editor

Smt. T.Sujatha, Deputy CEO

India's Foreign Trade: August 2022

		August 2022 (USD Billion)	August 2021 (USD Billion)	Growth vis-a-vis August 2021
Merchandise	Exports	33.92	33.38	1.62
	Imports	61.90	45.09	37.28
	Trade Balance	-27.98	-11.71	-138.88
Services*	Exports	23.54	20.45	15.12
	Imports	13.94	11.87	17.47
	Net of Services	9.60	8.59	11.86
Overall Trade (Merchandise+ Services)*	Exports	57.47	53.83	6.75
	Imports	75.84	56.96	33.15
	Trade Balance	-18.37	-3.13	-487.80

***Note:** The latest data for services sector released by RBI is for July 2022. The data for August 2022 is an estimation, which will be revised based on RBI's subsequent release (ii) Data

Please visit for more details <https://commerce.gov.in/trade-statistics/latest-trade-figures/>



HELP DESK

We are very happy to inform that we have created a helpdesk for the benefit of all our members to support them with the necessary guidance in the following areas.



- ▶ Direct Taxes
- ▶ Indirect Taxes
- ▶ Human Resources (HR) & Industrial Relations (IR)
- ▶ Banking
- ▶ Insurance
- ▶ Health Care
- ▶ Legal
- ▶ MSMEs
- ▶ Energy
- ▶ International Trade.
- ▶ Company Law

The main purpose of creating the helpdesk is to provide guidance to the members in getting the necessary help to resolve the problems.

All the members are requested to make use of this helpdesk facility

Forward your queries to helpdesk@ftcci.in

Officer Incharge : Lokesh Fatehpuria, Joint Director, FTCCI Ph.No.8309788764

QUICK ESTIMATES FOR SELECTED MAJOR COMMODITIES FOR AUGUST 2022

TRADE: EXPORT

Sl. No.	Commodities	Values in Rs Crore				% Change	
		AUG'21	APR'21- AUG'21	AUG'22	APR'22- AUG'22	AUG'22	APR'22- AUG'22
1	Tea	559.18	2193.75	658.59	2541.06	17.78	15.83
2	Coffee	569.06	2794.03	714.40	4027.98	25.54	44.16
3	Rice	5381.74	28483.03	8287.39	36732.01	53.99	28.96
4	Other cereals	451.59	2920.11	505.75	3687.37	11.99	26.27
5	Tobacco	536.26	2856.08	1014.41	4180.09	89.17	46.36
6	Spices	2320.36	12453.40	2577.86	12552.63	11.10	0.80
7	Cashew	262.76	1372.66	193.04	1048.41	-26.53	-23.62
8	Oil Meals	337.39	3030.88	628.42	3856.55	86.26	27.24
9	Oil seeds	581.22	2983.06	629.90	3682.08	8.37	23.43
10	Fruits & Vegetables	1656.41	8037.10	2004.51	9229.69	21.02	14.84
11	Cereal preparations & miscellaneous processed items	1341.22	6606.53	1731.08	9117.62	29.07	38.01
12	Marine Products	5093.96	23376.56	5278.04	26575.21	3.61	13.68
13	Meat, dairy & poultry products	2039.20	11492.77	2673.63	13773.47	31.11	19.84
14	Iron Ore	1083.85	16476.17	106.61	5032.40	-90.16	-69.46
15	Mica, Coal & Other Ores, Minerals including processed minerals	3150.26	14830.96	3064.60	17694.87	-2.72	19.31
16	Leather & leather products	2862.99	12286.38	3405.08	16745.94	18.93	36.30
17	Ceramic products & glassware	2187.71	10808.26	2544.69	12603.63	16.32	16.61
18	Gems & Jewellery	25464.80	118937.22	26494.20	131580.40	4.04	10.63
19	Drugs & Pharmaceuticals	14902.78	73594.00	17061.72	82276.11	14.49	11.80
20	Organic & Inorganic Chemicals	16549.45	85322.10	20137.57	104267.32	21.68	22.20
21	Engineering Goods	71685.26	333763.59	65963.27	364147.27	-7.98	9.10
22	Electronic Goods	8504.76	39672.75	13756.13	64827.62	61.75	63.41
23	Cotton Yarn/Fabs./made-ups, Handloom Products etc.	9665.59	44295.02	7030.71	38957.29	-27.26	-12.05
24	Man-made Yarn/Fabs./made-ups etc.	3410.61	16516.22	3336.57	17070.60	-2.17	3.36
25	RMG of all Textiles	9182.86	44674.49	9813.70	55461.42	6.87	24.15
26	Jute Mfg. including Floor Covering	308.35	1392.82	334.89	1655.26	8.61	18.84
27	Carpet	1067.31	5284.10	829.12	4715.94	-22.32	-10.75
28	Handicrafts excl. handmade carpet	1352.08	6208.02	925.78	4628.60	-31.53	-25.44
29	Petroleum Products	34535.49	173064.83	45463.80	320872.06	31.64	85.41
30	Plastic & Linoleum	5604.89	30764.89	5944.44	30482.73	6.06	-0.92
	Sub-Total	232649.39	1136491.78	253109.90	1404023.63	8.79	23.54
	GRAND TOTAL	247633.63	1216966.47	269874.67	1511224.41	8.98	24.18

Note 1: Grand total is inclusive of component 'Other'.

Note 2: The figures for AUG'22 are provisional.

QUICK ESTIMATES FOR SELECTED MAJOR COMMODITIES FOR AUGUST 2022

TRADE: EXPORT

Sl. No.	Commodities	Values in Million USD				% Change	
		AUG'21	APR'21- AUG'21	AUG'22	APR'22- AUG'22	AUG'22	APR'22- AUG'22
1	Tea	75.38	296.25	82.78	324.03	9.82	9.38
2	Coffee	76.71	377.65	89.80	516.23	17.06	36.70
3	Rice	725.45	3848.56	1041.72	4694.75	43.60	21.99
4	Other cereals	60.87	394.85	63.57	471.89	4.44	19.51
5	Tobacco	72.29	386.22	127.51	534.07	76.39	38.28
6	Spices	312.78	1682.17	324.03	1605.55	3.60	-4.55
7	Cashew	35.42	185.35	24.26	134.36	-31.51	-27.51
8	Oil Meals	45.48	409.57	78.99	494.33	73.68	20.69
9	Oil seeds	78.35	402.95	79.18	471.91	1.06	17.11
10	Fruits & Vegetables	223.28	1085.32	251.97	1181.76	12.85	8.89
11	Cereal preparations & miscellaneous processed items	180.79	892.79	217.60	1167.15	20.36	30.73
12	Marine Products	686.66	3158.31	663.45	3399.24	-3.38	7.63
13	Meat, dairy & poultry products	274.88	1553.77	336.07	1764.47	22.26	13.56
14	Iron Ore	146.10	2228.22	13.40	655.95	-90.83	-70.56
15	Mica, Coal & Other Ores, Minerals including processed minerals	424.65	2003.89	385.22	2266.40	-9.29	13.10
16	Leather & leather products	385.93	1659.38	428.02	2141.23	10.91	29.04
17	Ceramic products & glassware	294.90	1460.53	319.87	1612.41	8.47	10.40
18	Gems & Jewellery	3432.63	16064.07	3330.30	16841.76	-2.98	4.84
19	Drugs & Pharmaceuticals	2008.88	9943.40	2144.64	10526.45	6.76	5.86
20	Organic & Inorganic Chemicals	2230.85	11531.77	2531.28	13343.70	13.47	15.71
21	Engineering Goods	9663.09	45101.04	8291.53	46630.91	-14.19	3.39
22	Electronic Goods	1146.43	5358.82	1729.13	8289.43	50.83	54.69
23	Cotton Yarn/Fabs./made-ups, Handloom Products etc.	1302.91	5984.47	883.75	4992.91	-32.17	-16.57
24	Man-made Yarn/Fabs./made-ups etc.	459.75	2231.34	419.40	2185.17	-8.78	-2.07
25	RMG of all Textiles	1237.84	6032.77	1233.57	7105.39	-0.34	17.78
26	Jute Mfg. including Floor Covering	41.57	188.15	42.10	211.98	1.27	12.67
27	Carpet	143.87	713.98	104.22	604.03	-27.56	-15.40
28	Handicrafts excl. handmade carpet	182.26	838.53	116.37	592.33	-36.15	-29.36
29	Petroleum Products	4655.35	23386.97	5714.76	41102.01	22.76	75.75
30	Plastic & Linoleum	755.53	4159.35	747.21	3901.29	-1.10	-6.20
	Sub-Total	31360.88	153560.44	31815.70	179763.09	1.45	17.06
	GRAND TOTAL	33380.73	164436.11	33923.03	193514.65	1.62	17.68

Note 1: Exports include Re-Exports.

Note 2: The figures for AUG'22 are provisional.

Note 3: Grand total is inclusive of component 'Other

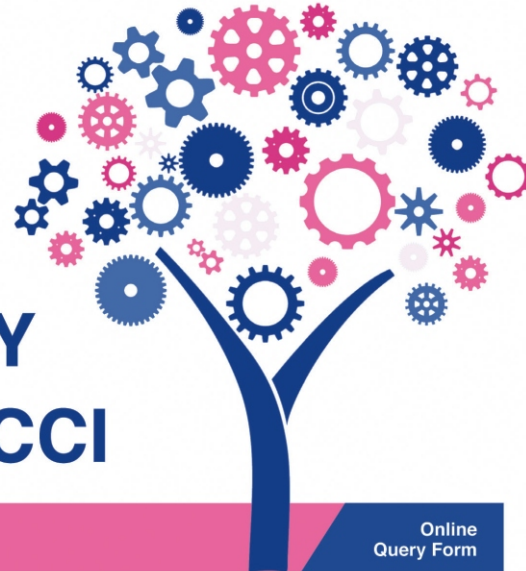


The Federation of Telangana Chambers of Commerce and Industry

Federation House, Red Hills, Post Box No. 14,
Lakdikapool, Hyderabad - 500 004
Ph : 23395515 (8 lines)
e-mail : info@ftcci.in | Website : www.ftcci.in



The Federation of
Telangana Chambers of
Commerce and Industry



MSME ADVISORY SERVICES at FTCCI

Every Thursday (4.30 - 5.30 pm)

Online
Query Form

FTCCI has setup a "MSME Advisory Services", a novel initiative for its members, wherein domain and subject matter experts are available for hands-on mentoring, handholding and consultation for the MSME units.

Some of the areas to be addressed by the domain experts are :

- ✓ MSME General Issues
- ✓ Infrastructure development (water, power, roads, STP etc)
- ✓ Banking related issues
- ✓ Skill development
- ✓ Land related issues (TSIIC, Revenue, HMDA)
- ✓ Coordination with Govt agencies
- ✓ Any other issue that needs expert advice

Panel for Advisory Services will comprise the following:

Chairman : Sri BP Acharya, IAS (Retd.),
Chief Advisor, FTCCI
Member : Dr. B. Yerram Raju,
Advisor, IDC Committee, FTCCI

FTCCI requests members to avail this unique initiative by attending the one-on-one Mentoring session at the MSME Advisory Services.

Please send us your issues in advance, by email : kulkarni@ftcci.in, so that the same can be taken forward.

For further details/assistance, please contact Mr. R. Kulkarni, Director, FTCCI on 9848286640/8008579625.